

Project: \_\_\_\_\_  
 Location: \_\_\_\_\_  
 Cat. #: \_\_\_\_\_  
 Type: \_\_\_\_\_  
 Quantity: \_\_\_\_\_

LED

# GUA S Germicidal Upper Air Sconce

## Features:

- Upper air germicidal UVC illumination
- Low-wattage, ozone-free GUVT8 lamp reduces airborne pathogens
- Electronic ballast specifically matched to lamps for optimal performance and lifetime
- When mounted at the specified height, UVC light will not come into contact with human and pets
- Easy re-lamping process
- Green light indicator shows fixture is active, red light indicator shows when fixture is off

## Applications:

Suitable for most commercial and institutional applications

- Lobbies
- Hallways
- Offices
- Bathrooms
- Conference rooms
- Hotels
- Retail

## Predicted Lifetime:

- Lamp life: 18,000 hours

## Construction:

- Housing constructed of durable cold rolled steel with a white or black powder coat finish
- Stainless steel housing optional
- Polished aluminum reflector optimized for dispersion of UVC wavelength for irradiation of pathogens

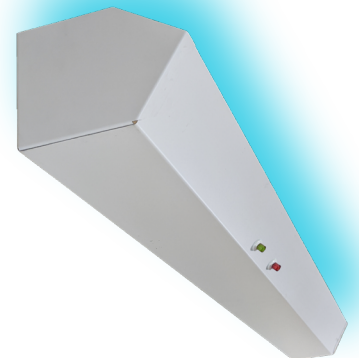
## Certifications:

- UL 1598 listed for US and Canada
- IEC 62471

## Warranty:

- 5 year limited system warranty - see [www.LumenFocus.com](http://www.LumenFocus.com) for complete warranty terms and conditions

**Note:** Successful UV disinfection requires a systems approach taking into account dose, optics, and safety relevant to the specific application. Please consult with factory and questions or concerns.



**Caution:** Potentially hazardous situation. Avoid looking directly at the light and take necessary precautions during installation or maintenance of this product. Lamps used in this product contain mercury.

# GUA S Germicidal Upper Air Sconce

## Ordering Guide:

example: GUA S 4 1 36 GUVT8 UNV

Series	Mounting	Size	# of Lamps	Wattage	Lamp Type	Voltage	Finish
GUA	S		1		GUVT8	UNV	
GUA	S	2	1	25W	GUVT8	UNV	W B SS
		4		36W			

**Mounting:** S Sconce

**Lamp Type:** GUVT8 GUVT8

**Length:** 2 2'  
4 4'

**Voltage:** UNV 120-277V

**# of Lamps:** 1 1

**Finish:** W White  
B Black  
SS Stainless steel

**Wattage:** 25 25W (2' only)  
36 36W (4' only)

## Performance Chart:

Catalog #	Nominal UVC	UVC Out Of Fixture	Input Watts	Bare Lamp Irradiance	Lamp Useful Life
GUA S 2 1 25 GUVT8 UNV	7.5	6.07	TBD	68.6 uW/cm <sup>2</sup>	18,000 hours
GUA S 4 1 36 GUVT8 UNV	15.5	12.54	51	145 uW/cm <sup>2</sup>	18,000 hours

